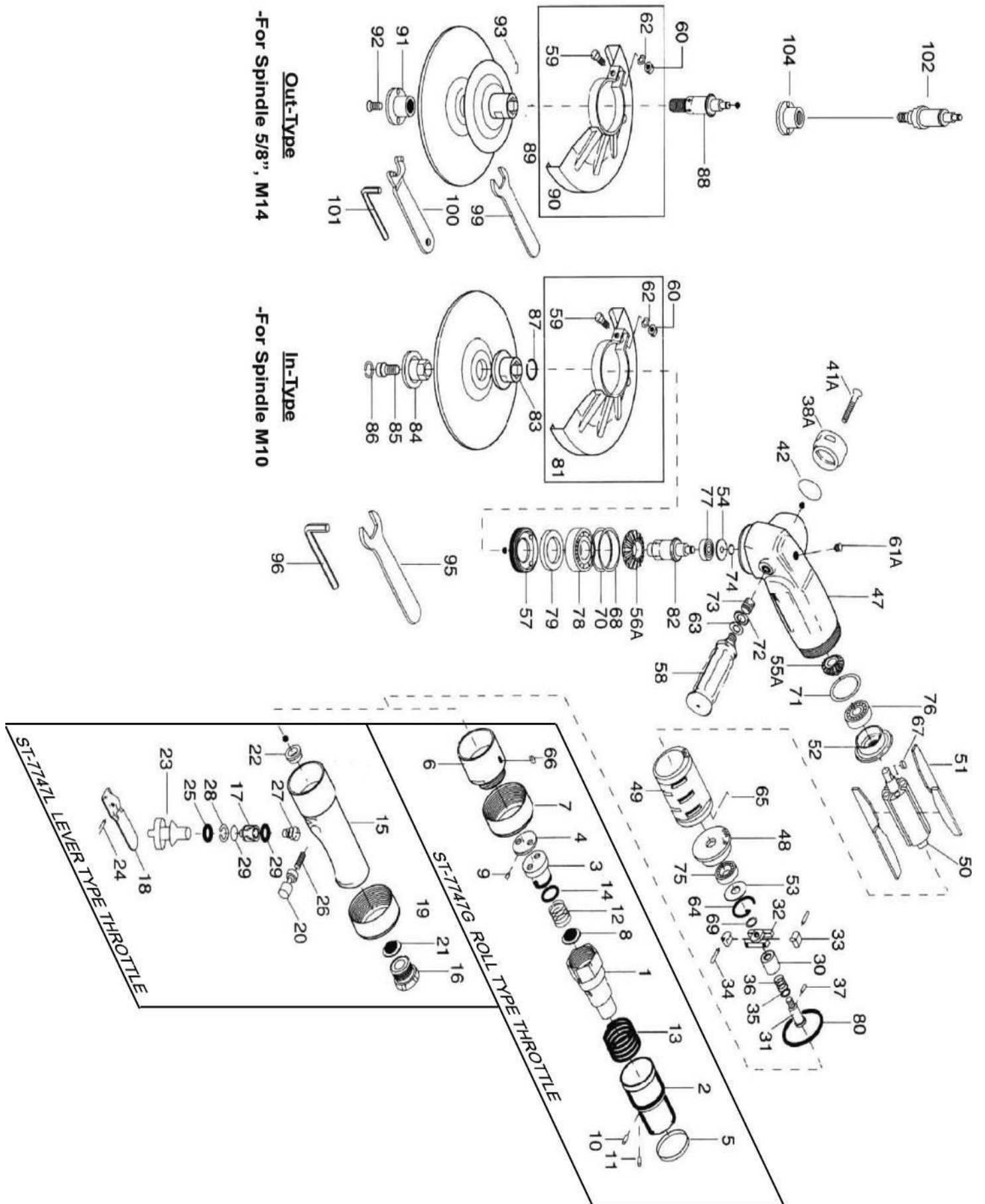


C12273

7" INDUSTRIAL AIR GRINDER (LEVER TYPE THROTTLE)



C12273

7" INDUSTRIAL AIR GRINDER (LEVER TYPE THROTTLE)

No.	Parts No.	Description	Q'ty
1	C12273-01	Valve Body [ST-C12273G]	1
2	C12273-02	Valve Handle [ST-C12273G]	1
3	C12273-03	Valve [ST-C12273G]	1
4	C12273-04	Valve Seat [ST-C12273G]	1
5	C12273-05	Band [ST-C12273G]	1
6	C12273-06	Connector [ST-C12273G]	1
7	C12273-07	Valve Body Nut [ST-C12273G]	1
8	C12273-08	Filter [ST-C12273G]	1
9	C12273-09	Pin (H) (3x6) [ST-C12273G]	1
10	C12273-10	Roller Pin (4x8) [ST-C12273G]	1
11	C12273-11	Roller Pin (2x8) [ST-C12273G]	1
12	C12273-12	Spring (23x20) [ST-C12273G]	1
13	C12273-13	Spring (40.5x25) [ST-C12273G]	1
14	C12273-14	O-Ring [ST-C12273G]	1
15	C12273-15	Handle [ST-C12273L]	1
16	C12273-16	Air Inlet Bushing [ST-C12273L]	1
17	C12273-17	Valve Bushing [ST-C12273L]	1
18	C12273-18	Valve Lever [ST-C12273L]	1
19	C12273-19	Valve Body Nut [ST-C12273L]	1
20	C12273-20	Safety Pin [ST-C12273L]	1
21	C12273-21	Filter [ST-C12273L]	1
22	C12273-22	Governor Valve Bushing [ST-C12273L]	1
23	C12273-23	Valve Stem [ST-C12273L]	1
24	C12273-24	Roll Pin (3.5x24) [ST-C12273L]	1
25	C12273-25	O-Ring [ST-C12273L]	2
26	C12273-26	Spring (6x18) [ST-C12273L]	1
27	C12273-27	Cone Spring (10x16x16) [ST-C12273L]	1
28	C12273-28	Snap Ring (R18) [ST-C12273L]	1
29	C12273-29	O-Ring (13.6x1.5) [ST-C12273L]	2
30	C12273-30	Governor Valve	1
31	C12273-31	Governor Spindle	1
32	C12273-32	Governor Cage	1
33	C12273-33	Governor Weight	2
34	C12273-34	Roll Pin (3x20)	2
35	C12273-35	Adjusting Spacer (13x10xT)	1
36	C12273-36	Spring (13.3x19)	1
37	C12273-37	Pin (H) (3x7)	1
38A	C12273-38A	Exhaust Stack	1
41A	C12273-41A	Muffler Stem Assembly	1
42	C12273-42	O-Ring (33.4x2.1)	1
47	C12273-47	Casing	1
48	C12273-48	Cylinder Rear Plate	1
49	C12273-49	Cylinder	1
50	C12273-50	Rotor	1
51	C12273-51	Vane	4
52	C12273-52	Front Plate	1
53	C12273-53	Cylinder Rear Plate Spacer	1
54	C12273-54	Wheel Spindle Rear Cover	1

No.	Parts No.	Description	Q'ty
55A	C12273-55A	Driving Gear	1
56A	C12273-56A	Driven Gear	1
57	C12273-57	Casing Front Cover	1
58	C12273-58	Dead Handle	1
59	C12273-59	Head Bolt (M6x22)	1
60	C12273-60	Nut (M6)	1
61A	C12273-61A	Oiler	1
62	C12273-62	Spring Washer (S6)	1
63	C12273-63	Spring Washer (S12)	1
64	C12273-64	Snap Ring (34x1.2)	1
65	C12273-65	Roll Pin (3x8)	1
66	C12273-66	Key (3x2.5x11) [ST-C12273G]	1
67	C12273-67	Key (3x8)	1
68	C12273-68	Spacer (47x43x0.5)	1
69	C12273-69	Spacer (12x8.5x1)	1
70	C12273-70	Adjusting Spacer (47x43x0.2)	1
71	C12273-71	Adjusting (47x43x0.5)	1
72	C12273-72	Washer (M12)	1
73	C12273-73	Heli Sret (12x1D)	1
74	C12273-74	Snap Ring (S7)	1
75	C12273-75	Ball Bearing (6001ZZ)	1
76	C12273-76	Ball Bearing (6201ZZ)	1
77	C12273-77	Ball Bearing (627ZZ)	1
78	C12273-78	Ball Bearing (6204ZZ)	1
79	C12273-79	Fiatring (28x42x5)	1
80	C12273-80	O-Ring (49.5*2)	1
For Spindle M10			
81	C12273-81	Wheel Guard	1
82	C12273-82	Wheel Spindle (In) (M10x1.5)	1
83	C12273-83	Wheel Holder Flange	1
84	C12273-84	Wheel Nut Flange (M10x1.5)	1
85	C12273-85	Hex Bolt (M10x20)	1
86	C12273-86	Snap Ring (R17)	1
87	C12273-87	Snap Ring (21x1.2)	1
95	C12273-95	Spanner (24x5x195)	1
96	C12273-96	Aller Wrench (8mm)	1
For Spindle 5/8", M14			
88	C12273-88	Wheel Spindle (5/8"x11unc)	1
89	C12273-89	Wheel Holder Flange	1
90	C12273-90	Wheel Guard	1
91	C12273-91	Wheel Nut Flange (5/8"x11unc)	1
92	C12273-92	Head Screw (M6x18)	1
93	C12273-93	Roll Pin (3x22)	1
99	C12273-99	Spanner (24)	1
100	C12273-100	Spanner (6x30x17)	1
101	C12273-101	Aller Wrench (4mm)	1
102	C12273-102	Wheel Spindle (M14x2.0)	1
104	C12273-104	Wheel Nut Flange (M14x2.0)	1